

Windows® 10 Build 14393

Installation Guide



Stage 0. Downloading necessary files

In order to install & deploy this build to your machine, the official Windows 10 build 14393 (1607) ISO image will be used.

Start by downloading the ISO file. Downloads can be found in the following link:

- **Windows 10 LTSB 2016 x64** · <https://pixeldrain.com/u/TRWhnYjt>

Stage 1. Setting it up

Once you've downloaded the ISO image, deploy it to your computer. You may use some tools like *Ventoy*. Alternatively, use *Rufus* for inexperienced users.

1. Set language, time and currency format. Add keyboard and input method.
2. Skip windows activation.
3. Accept license terms.
4. Select custom installation

Use SHIFT+10 to open *cmd.exe*

```
diskpart
select disk x
clean
exit
```

5. Wait for installation to finish copying files.
6. Installation autocompletion
7. Select use domain account
8. Set username and password
9. Turn off prompts (Telemetry, Cortana, etc).

Stage 2. Device Manager. Installing Drivers

For HP Elite 8300 clients. Use the following list of drivers:

- NVidia Drivers · *474.11-desktop-win8-win7-64bit-international-whql.exe*
- Chipset Win10 · *Intel Bus Chipset win7_8.1_10_10.1.1.8.zip*
- Audio Driver · *audio.exe*

NOTES

On previous releases (Windows 7), ethernet and usb 3.0 drivers were also necessary in order to get all devices and hardware working correctly. On this Windows 10 build, this hardware doesn't require additional drivers installation.

Stage 3. Custom Configuration

A. Registry Changes

A .reg file has been created for this Windows 10 build in order to provide a better performance and the best usage possible.

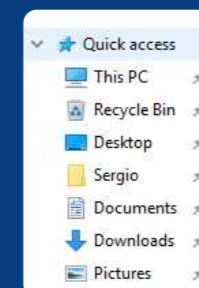
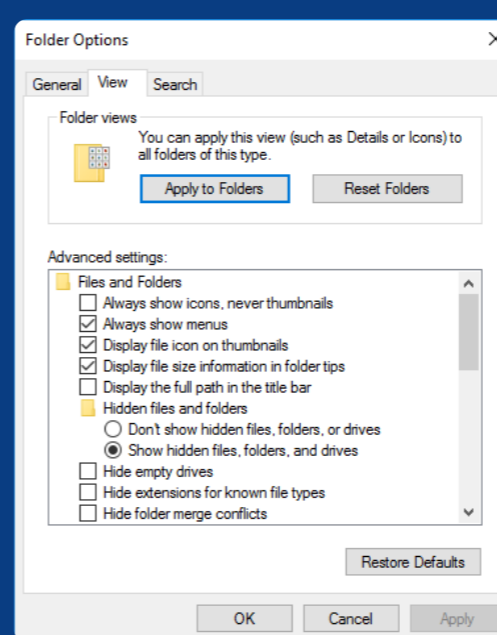
The registry file make the following changes:

- Disables Action Center and enable legacy notifications
- Disables change password on ctr+alt+spr
- Disables F1 Help Key on explorer
- Disables File History
- Disables HomeGroup
- Disables MeltDown for processor performance
- Disables Scrolling Bounce
- Disables unnecessary web services
- Disables Windows Defender
- Disables Windows Transparency
- Disables Xbox Game Bar
- Enabled Explorer restart on desktop context menu
- Enables old-style volume control
- Enables TakeOwnership in context menu (shift)
- Enables Windows Photo Viewer

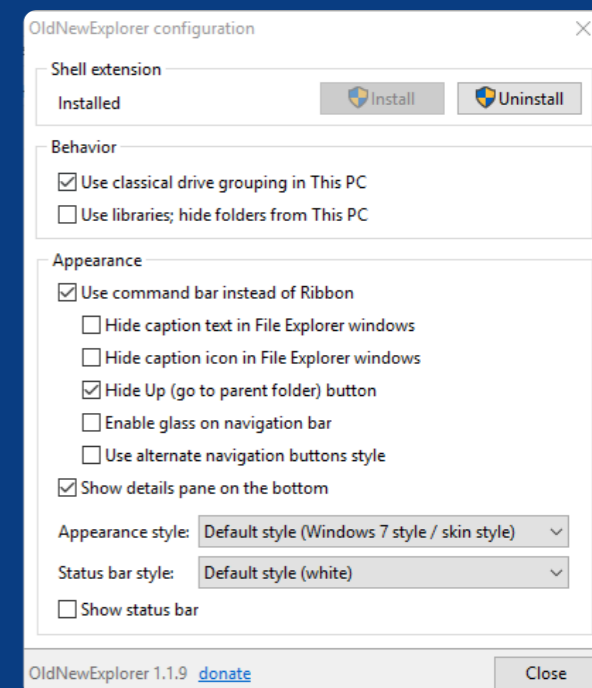
The Registry Editor file can be found on the resources folder from the USB you have been provided with.

B1. Visual looks on explorer

For explorer, it's always a good idea to show extensions of files, not only for security reasons but for knowledge. Also show hidden folders and **never** hide drivers or merge conflicts.



Don't forget adding your fav folder in the quick access!



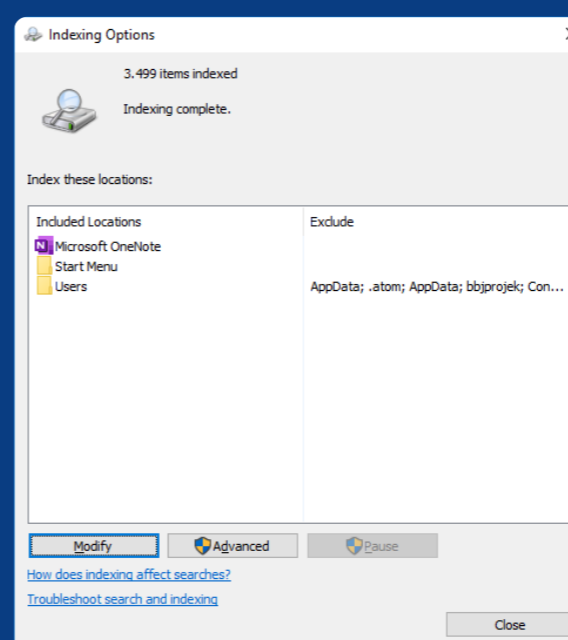
B2. A more useful explorer look

OldNewExplorer brings back useful features from the gold Windows 7 explorer.

Use the following settings for a quicker Windows 10 explorer:

B3. Indexing options

For the best performance and for better results in the Windows Search, make sure to check which folders are actually being indexed for the windows search. Note that is really important to only add the folders which contains real useful info and exclude program files and unnecessary data (such as git repos or internal data from executables)



Essentials folder can be:

- Documents folder
- Downloads folder
- Videos folder

B4. Windows Updates, but jut for once

Despite Windows Update being hated globally, its cumulative packages are essential for the correct behavior of the system. Windows 10 build 14393 has bugs that can be fixed by installing the updates.

As this version is an LTSB, Windows won't update to a newer build, it will only install security patches and fixes.

Once all the updates are installed, we can now **disable Windows Update**, head to the given folder among this document and run the "Toggle Windows Update.cmd" file

NOTES

You can browse the full Windows documentation and configuration online by visiting the following link:

<https://wiki.bbprojek.org/docs/windows/config/>

Stage 3. Custom Configuration (part II)

B5. BBJProjek's Program Pack

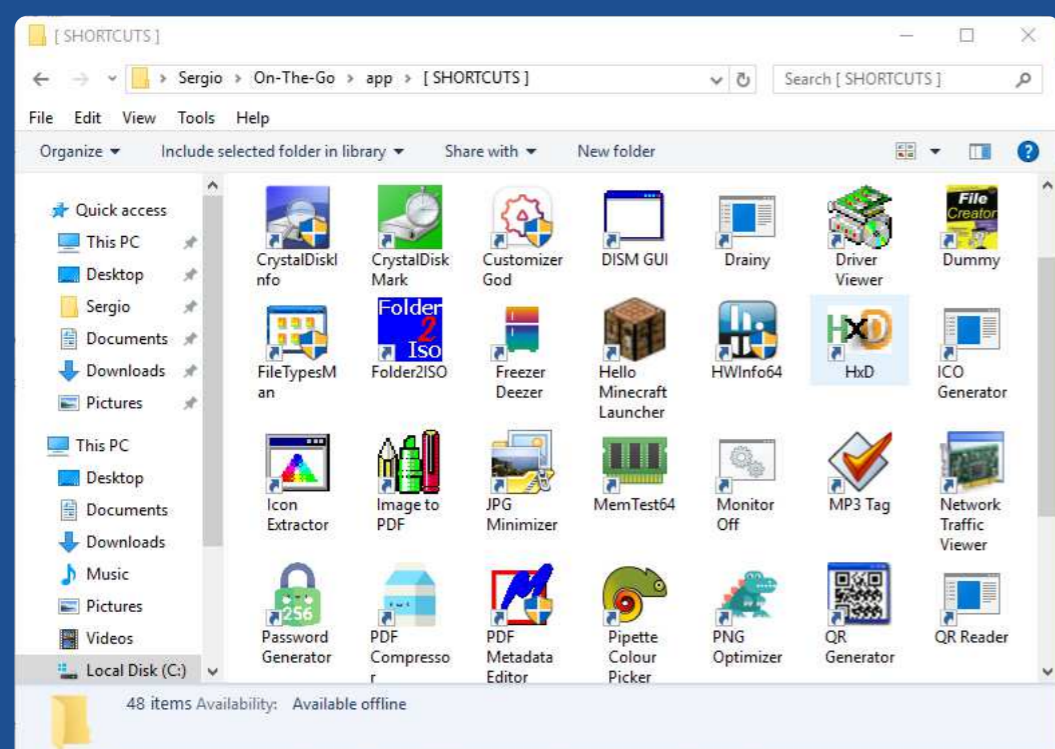
The BBJProjek's Program pack includes a set of programs and tools for a better Windows experience.

In order to use them in a quick way, you can copy the shortcuts (located in “\On-The-Go\app\[SHORTCUTS]” folder) to the user start menu.

NOTES

The user start menu can be opened by typing:

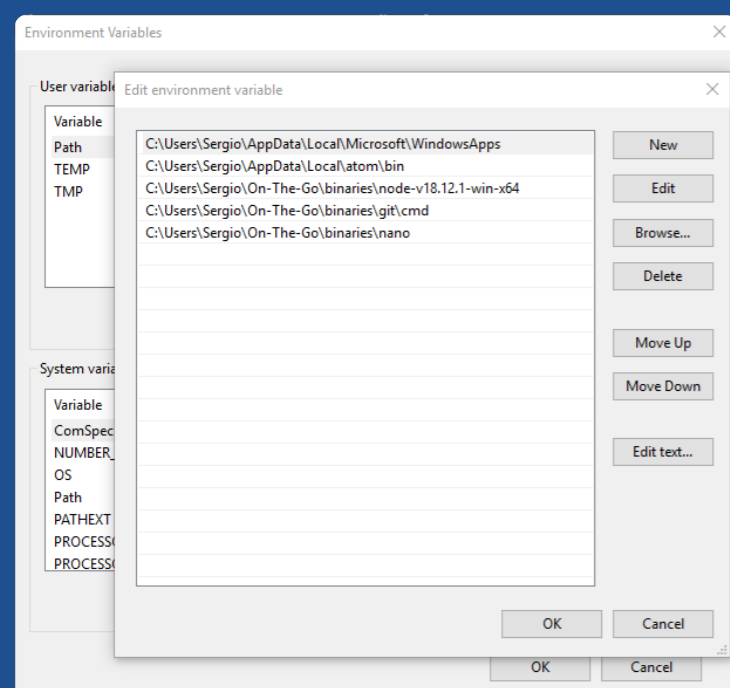
```
%userprofile%\AppData\Roaming\Microsoft\Windows\Start Menu
```



B6. Environment variables

Environment variables are often used to store the name of the environment in which the app is currently running. The app's logic can use this value to access the right set of resources or enable/disable certain features or sections of the app.

The default “On-The-Go” package contains the latest **nodejs**, **cmd** and **git** packages that will need to be added to the environment variables in order to use them.



Search “Environment Variables” in Windows Search and add the following packages:

```
%userprofile%\On-The-Go\binaries\node-v18.12.1-win-x64
```

```
%userprofile%\On-The-Go\binaries\git\cmd
```

```
%userprofile%\On-The-Go\binaries\nano
```

shell1

NOTES

On previous Windows versions, environment variables couldn't have added in the Windows 10 way, they were added in a single line separated by dot and comma:

```
%userprofile%\On-The-Go\binaries\node-v18.12.1-win-x64;%userprofile%\On-The-Go\binaries\git\cmd;%userprofile%\On-The-Go\binaries\nano
```

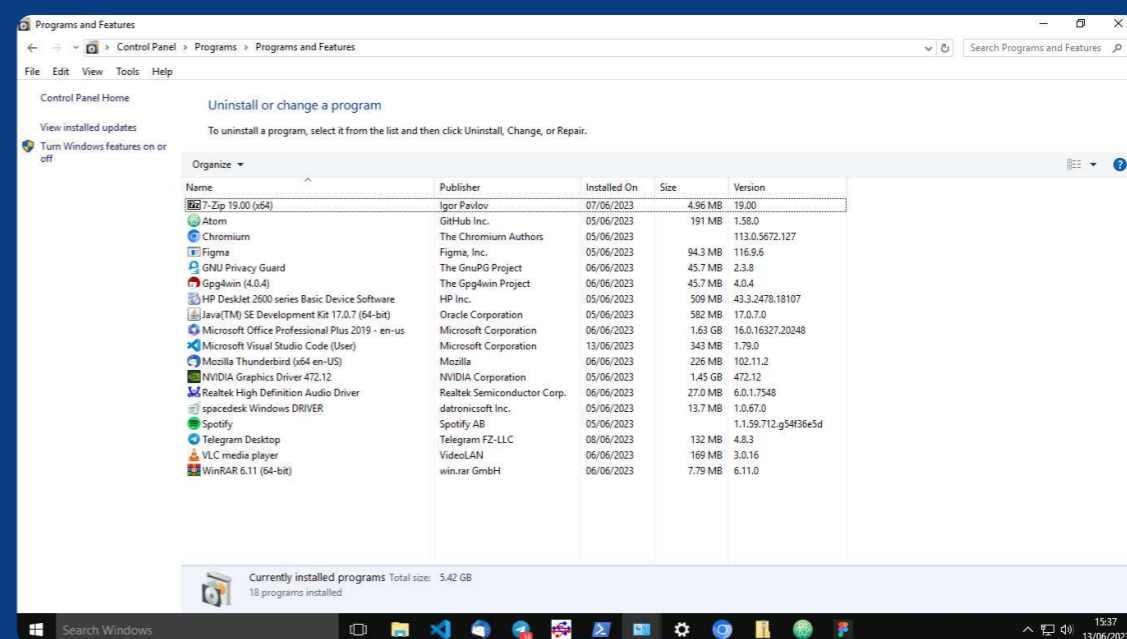
B7. Setting up control panel settings

Some stuff you might want to check on the control panel.

- **Power Options:** sleep, display timers, hybrid sleep...)
- **Language:** set language and keyboard input method)
- **Network settings:** disable or enable homegroup, customize network name, enable network discovery)

Stage 4. Programs

Reaching the end of the document, we can't forget installing the programs we will need to install. A screenshot is attached for the essential programs listed in the **bbjprojek essential software list**



- [7zip](#)
- [Atom](#) — [configuration](#)
- [Autofirma](#)
- [Chromium](#) — [configuration](#)
- [Figma](#)
- [GNU Privacy Guard](#)
- [Java Dev Kit](#)
- [LibreOffice](#)
- [Microsoft Office](#)
- [Microsoft Visual Studio Code](#)
- [Mozilla Thunderbird](#)
- [Spacedesk](#)
- [Spotify Desktop](#) — [configuration \(only step 2\)](#)
- [Telegram Desktop](#)
- [VLC Media Player](#)
- [VirtualBox VM](#)
- [WinRAR](#) — [configuration](#)

NOTES

Yellow links redirect to an old version of the program, due to better compatibility or other politics made by the bbjprojek team.

Note that none of the own-served programs contain virus or any other malware

Stage 5. Activation

The final steps include Windows & Office activation. The activation method is made by KMS server using genuine licensed previously purchased by the BBJProjek Org. This should be an automated process.

If you can't contact BBJProjek members, you can temporarily activate your machine by opening an elevated PowerShell window and pasting the following code:

```
irm https://maasgrave.dev/get | iex
```

NOTES

If you can't access PowerShell, you can launch the offline script called “Enabler.cmd” located in the documentation folder.

Stage 6. Optional checks

A. PowerShell external scripts

Run a powershell windows with elevated permissions:

```
Set-ExecutionPolicy unrestricted
```

B. Ungogled Chromium config

For setting google as default search engine:

Go to: `chrome://settings/searchEngines`

Fill the data as shown below:

- Search Engine: Google
- Shortcut: google.com
- URL with %s in place of query:
`https://www.google.com/search?q=%s`
- Suggestions URL with %s in place of query:
`https://www.google.com/complete/search?client=chrome&q=%s`